

Vivi Teacher Tip:



Real-Time Check for Understanding with Assessment

What is Real-Time Check for Understanding with Assessment?

Administer quick, formative checks for understanding with a single click and get student-by-student data instantly to help guide your lesson in real time.



Research Connections:

Real-Time Check for Understanding ensures educators are able to:

- Collect quick data on demand so that they can modify and adjust in the moment and offer **differentiated pathways and material** to support individual learners.
- Create **deliberate and sustained opportunities for practice** by ensuring educators have everything they need at their fingertips to pivot lessons quickly and deliver aligned practice opportunities in response to real-time data.



Targeted and Relevant



Growth Oriented

Educator Tips & Tricks:

“Our School is developing a learning culture, with the integration of formative assessment practice as a key driver of change. Vivi's Real-Time Check for Understanding with Assessment provides a fast and effective way to undertake check-in tasks, so that we can move our learning forward.”

Phillip Pain

Teacher, Human Society and its Environment



Research sourced from [The Learning Accelerator](#)

Check regularly

- Incorporate this strategy into your lessons regularly – for example, **at least once a day for a week** – to familiarize students with frequent, informal assessment.

Map answer choices to misconceptions

- In identifying the answer choices you offer students, **ensure incorrect responses map to common misconceptions.**

Try this strategy ...

- Instead of administering a **paper-and-pencil warm-up, check for understanding, or exit tickets** that would need to be graded after class.
- To gather data with the press of a button to **inform student groupings for re-teaching, continued practice, and extension.**

Join the [Vivi Teacher Community](#)

Try it in your own classroom!



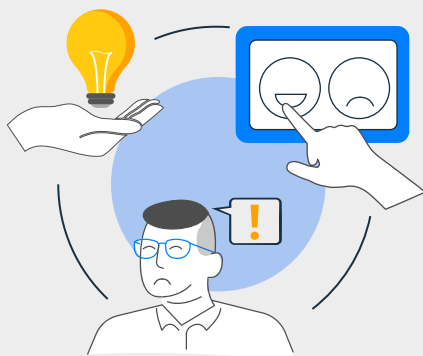
Hear from other Vivi users

Find out how Cleveland County Schools Instructional Technology Coordinator Ginger Jackson uses [Real-Time Check for Understanding with Assessment](#) to help guide lessons.



Identify ways to insert it into your daily lesson plan

Students and educators use a number of different Vivi features—aligned strategies including Real-Time Check for Understanding with Assessment in their lesson on [summarizing a fiction passage](#), developed by educators Jennifer Osbourne and Ginger Jackson at Cleveland County Schools in Shelby, North Carolina, USA.



Welcome mistakes along the way

Talk explicitly about the value of mistakes and “getting it wrong.” **Explain that not all assessments are evaluative; some are instead intended to help you grow.** You can further model this by acknowledging your own moments of growth in an effort to help students feel safe and build their own growth mindset.



Warm up with a non-instructional strategy

Consider introducing the Assessment feature to students with a **non-instructional question before using Real-Time Check for Understanding**. This allows students to familiarize themselves with the process. Some examples teachers have used are:

- What Harry Potter house would you belong to?
- Would you rather watch sports, play sports, or neither?

